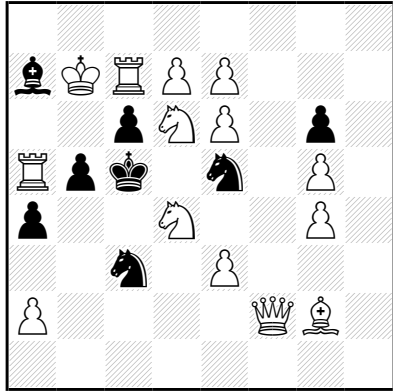


g648 - Ľudovít LAČNÝ
Peter GVOZDJÁK
Jean-Marc LOUSTAU
Pat a Mat 2006
(for Riphey 2006 - section B)



#3 (14+8) C+

1.Qf4? [2.S4f5! **A** [3.Qd4#]]
 1...Kb4 **a** 2.Sc2+ **B** Kxa5 3.Qb4#
 (2...Kc5 3.Qb4 (Qd4)#)
 1...Se4 **b** 2.Rxb5+ **C** Kxd6 3.d8=Q#
 1...Sf7 **c** 2.Sb3+ **D** axb3 3.Qd4 (Rxc6)#
 1...Kxd6 **d** 2.Rxc6+ **E** Kxe7 3.Qf6#
 mais 1...Sc4!

1.Qd2! [2.Sc2! **B** [3.Qd4#]]
 1...Kb4 **a** 2.Rxb5+ **C** cxb5 3.Qxc3#
 (2...Ka3 3.Qb2#)
 1...Se4 **b** 2.Sb3+ **D** axb3 3.Qd4 (Rxb5)#
 1...Sf7 **c** 2.Rxc6+ **E** Kb4 3.Qxc3#
 1...Kxd6 **d** 2.Sf5+ **A** Kc5 3.Qd4#
 (2...Kxe6 3.e8=Q (d8=S)#)

Source :
 1024 Pat a mat 52 (3.2006) p312

Juge : M. Dragoun

Jugement : not judged yet

Commentaires :

Incredible: 5-fold Shedy cycle is possible in an orthodox threemover!
 Compare to 3-fold (No. 745-771) and 4-fold cycles (No. 838-840) in CYCLONE.
 It took years from the idea to the final position.