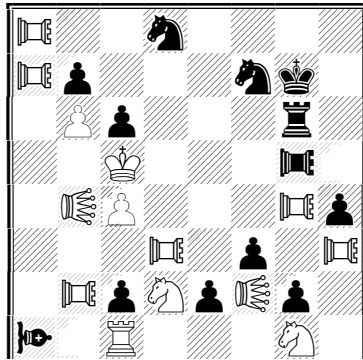


M.Caullaud (France)
Special Prize, Wola Gulovska 2006



White : Kc5 Tc1 Sd2g1 Pb6c4 Paoa8a7g4d3h3 Vaob2 Leob4f2

Black : Kg7 Tg6 Sd8f7 Pb7c6h4f3c2e2g2 Paog5 Vaoa1

s#2 (14+13) C+

1.Sb3! z

1...e1=D 2.Paoc3+ De5# (2.Sd4+? Dc3!; 2.Leoxb7+? De7+!)

1...e1=T 2.Sd4+ Te5# (2.Paoc3+? Te5+ 3.Kd4!; 2.Paodd4+? Te5+ 3.Paod5!)

1...e1=L 2.Leoxb7+ Sxb7#

1...e1=S 2.Paoe3 Sd3,Se6#

1...e1=Leo 2.Leod4+ Leoc3# (2.Paodd4+? Leoc3+! 3.Paocxc3!)

1...e1=Pao 2.Paodd4+ Paoee5# (2.Sd4+? Paoee5+ 3.Sf5!)

1...e1=Vao 2.Leobd2 Se6#

7 variations super-AUW in s#2 without using easing condition (as Maximum or Madrasi) or easing mechanism (as black battery created by promoting Pawn)...