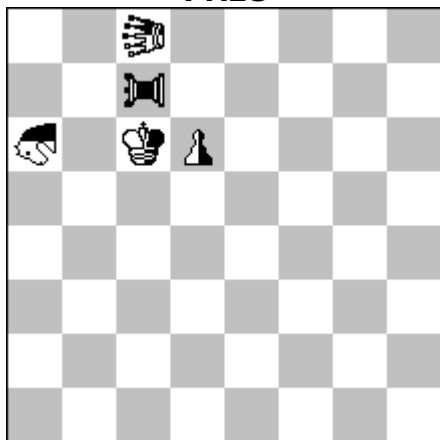


Ján Golha
4056 Ural Problemist N°45 3/2006
Prize



h3,5# **0+1+4**
Parrain Circe

A: diagram
B: nKc6 → c3

Neutral Locust - c8
Neutral Princess - a6
Neutral Pawn - d6
Pao - c7

A:

1... nKd5
2.PAc6 nPRxc8
3.PAc5 (+nLc7) nPRd7
4.nLxd6-e5 nPRxe5 (+nPe4)#

1... nPRxc7
2.nKc5 (+bPAc6)+ nPd7
3.nPRd8 nKd6
4.nLxd7-e6 nPRxe6 (+nPe5)#

B: nKc6 → c3

1... nPRxc8
2.PAc5 (+nLc6) nPRxd6
3.PAc4 (+nPd5) nKd4
4.nLxd5-e4 nPRxe4 (+nPe3)#

Three model echo mates.
Specific mates in Parrain Circe the
King can't escape because a Locust
rises again.

Ján Golha
Lúky 1231/89
952 01 Vráble
Slovakia

www.goja.sk

goja@goja.sk