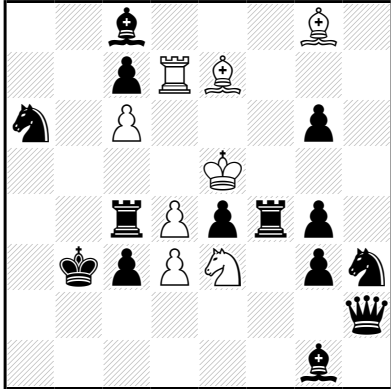


g668 - Peter GVOZDJÁK
after Š. Sovík
The Problemist 2006
(for Riphey 2006 - section G)



r#2 (8+14) C+

1.Be6? [2.Sd5 **A** B×d4#]
 1...Rf4~ **a** 2.d5 **B** g2#
 1...Rf6! **b** 2.Rd5 **C** R×e6#
 1...Rf5+! 2.K×e4 Sf2#
 mais 1...Sg5!

1.dxe4! [2.d5 **B** Rc×e4#]
 1...Rf4~ **a** 2.Rd5 **C** g2#
 1...Rf6! **b** 2.Sd5 **A** B×d4#
 1...Rf5+! 2.Ke6 Sf4#
 1...R×e4+! 2.Kd5 Rc×d4#

Source :
 S2125R The Problemist 7.2006 p448

Juge : M. Mladenović

Jugement : not judged yet

Commentaires :

Pioneer example of the Shedey cycle after random and correction defences in a reflexmate.
 All White thematic moves on the same square (d5).
 Additional Black correction, additional White King variation on d5, additional changed play.
 Sovík's inspiration problem (4th Pr Spišská borovička 2005) showed neither Black correction,
 nor the defences by same units.