

## LEGNICA 2005

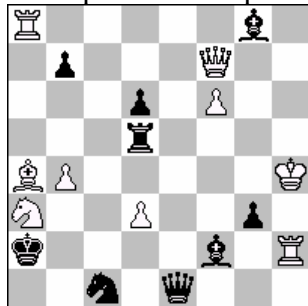
### Announcement

On occasion of the EUROPEAN CHESS SOLVING CHAMPIONSHIP in Legnica (Poland) 18<sup>th</sup> – 19<sup>th</sup> June 2005 the Organisation Committee announces an International Composing Tourney in following sections:

#### **1. helpmates in 2 moves [h#2] – judge: Waldemar TURA**

Theme: black pawn from 7<sup>th</sup> rank keys (first moves) in two phases (solutions, twins).  
Zeropositions and set play are not allowed.

Example I : J. Korponai, 1 PR Dunaujvaros 1970



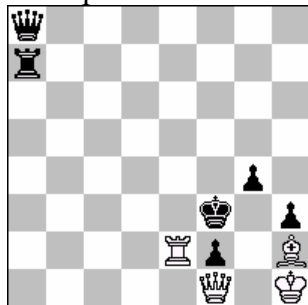
h#2 2,1;1,1. (9+9)

1.b5, Sc4 2.Rc5, Bc2# 1.b6, Bc2 2.Bc5, Sc4#

#### **2 selfmates in 2 moves [s#2] – judge: Władysław ROSOLAK**

Theme: one phase with precisely three thematic variants.

Example II : E. Iwanow, 1 PR Gazeta Częstochowska 1970



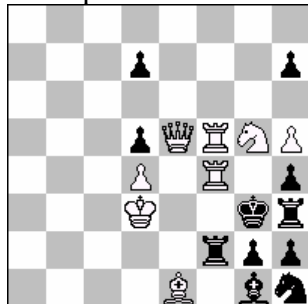
s#2 (4+6)

1.Re4 ! ~ 2.Qg2+, h:g2# 1...K:e4 2.Qd3+, K:d3# 1...Ra1 2.R-e3+, K:e3# 1.Q:e4 2.Q:\*f2+, K:f2#

#### **3 selfmates in 3 moves [s#3] – judge: Waldemar TURA**

At last 2 thematic variants with reciprocal (no cyclic) change of 2<sup>nd</sup> and 3<sup>rd</sup> white moves according to pattern AB – BA. Another thematic variants CD – DC are acceptable.

Example III : E. Iwanow, v. 1 PR Biuletyn OZSz 1976



s#3 (8+11)

1.Rf8 ! zugzwang.

1...d6 2.Qh8! A h6 3.Sf7 B, K:f4#

1...h6 2.Sf7! B d6 3.Qh8 A, K:f4#

Deadline for entries by post: **1<sup>st</sup> June 2005** (date of post stamp) to  
**Władysław ROSOLAK , Sadowa 18/20 m. 47, 91–465 ŁÓDŹ, POLAND**

or by e-mail: till **10<sup>th</sup> June 2005** to e-mail address:

[legnica2005@poczta.fm](mailto:legnica2005@poczta.fm)

E-mail entries in any known notation (not diagrams) and including the sender's postal address.

Award will be announced **19<sup>th</sup> June 2005** and send by e-mail to all competitors.